

YÜKSEK KAPASİTELİ  
740 x 740 KASALI ELEK

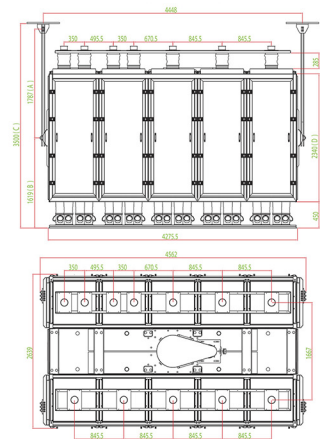
HIGH CAPACITY SIFTER  
WITH 740 x 740 SIEVES

**GMJ**  
Serisi  
**GMJ**  
Series

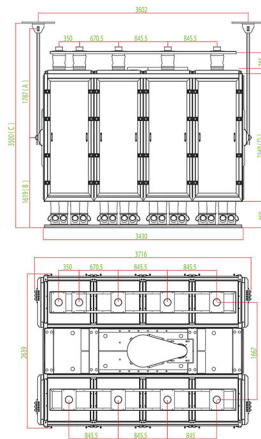


**gazel**  
milling

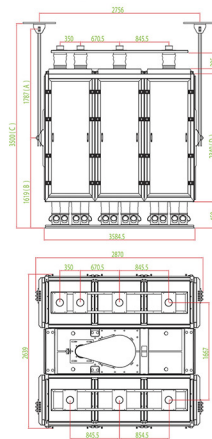
**GMJ 10 (30-28-24-20)**



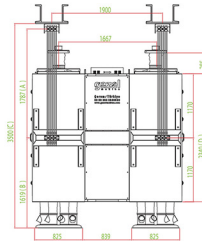
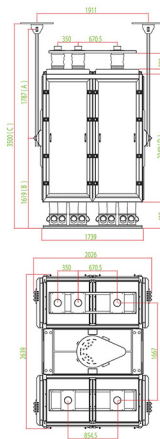
**GMJ 8 (30-28-24-20-16)**



**GMJ 6 (30-28-24-20-16)**



**GMJ 4 (30-28-24-20-16)**



**GMJ 10-8**

Tip Type	Panel Sayısı Number of Section	Ölçüler Measures (mm)				HP Pnövalikli Elek Sayısı Number of Sieves per Section	Toplam Kasa Yüksekliği Total Height of Sieves	Yaklaşık Eleme Alanı (m <sup>2</sup> ) Approximate Sifting Area (m <sup>2</sup> )				Motor Devri Engine Speed (rpm)	Makine Devri Machine Speed (rpm)	Motor kw Engine kw	Makine Çapı Machine Working Circle Diameter (mm)	Yaklaşık Ağırlık Approximate Weight (KG)
		A	B	C (mm)	D			G TIP-11 TYPE								
								Max	Min	Max	Min					
GMJ 10/30	10	1787	1619	3500	2340	30-26	214	144,72	125,42	120,80	104,82	1000	245	11	65	7510
GMJ 10/28	10	1712	1544	3350	2190	28-24	199	135,07	115,78	112,56	96,48	1000	245	11	65	7300
GMJ 10/24	10	1562	1394	3050	1890	24-20	169	115,78	96,48	96,48	80,40	1000	245	11	65	6870
GMJ 10/20	10	1500	1244	2838	1690	20-16	139	96,48	77,18	80,40	64,32	1000	245	7,5	65	6430
GMJ 8/30	8	1787	1619	3500	2340	30-26	214	115,78	100,34	96,48	83,62	1000	245	7,5	65	6500
GMJ 8/28	8	1712	1544	3350	2190	28-24	199	108,06	92,62	90,05	77,18	1000	245	7,5	65	6300
GMJ 8/24	8	1562	1394	3050	1890	24-20	169	92,62	77,18	77,18	64,32	1000	245	7,5	65	5950
GMJ 8/20	8	1500	1244	2838	1690	20-16	139	77,18	61,75	64,32	51,46	1000	245	5,5	65	5600
GMJ 8/16	8	1500	1094	2688	1290	16-12	109	61,75	46,31	51,46	38,59	1000	245	5,5	65	5150

**GMJ 6-4**

Tip Type	Panel Sayısı Number of Section	Ölçüler Measures (mm)				HP Pnövalikli Elek Sayısı Number of Sieves per Section	Toplam Kasa Yüksekliği Total Height of Sieves	Yaklaşık Eleme Alanı (m <sup>2</sup> ) Approximate Sifting Area (m <sup>2</sup> )				Motor Devri Engine Speed (rpm)	Makine Devri Machine Speed (rpm)	Motor kw Engine kw	Makine Çapı Machine Working Circle Diameter (mm)	Yaklaşık Ağırlık Approximate Weight (KG)
		A	B	C (mm)	D			G TIP-11 TYPE								
								Max	Min	Max	Min					
GMJ 6/30	6	1787	1619	3500	2340	30-26	214	86,83	75,25	72,36	62,71	1000	245	5,5	65	5170
GMJ 6/28	6	1712	1544	3350	2190	28-24	199	81,04	69,47	67,54	57,89	1000	245	5,5	65	4970
GMJ 6/24	6	1562	1394	3050	1890	24-20	169	69,47	57,89	57,89	48,24	1000	245	5,5	65	4570
GMJ 6/20	6	1500	1244	2838	1690	20-16	139	57,89	46,31	48,24	38,59	1000	245	5,5	65	4170
GMJ 6/16	6	1500	1094	2688	1290	16-12	109	46,31	34,73	38,59	28,94	1000	245	5,5	65	3740
GMJ 4/30	4	1787	1619	3500	2340	30-26	214	57,89	50,17	48,24	41,81	1000	245	4	65	3800
GMJ 4/28	4	1712	1544	3350	2190	28-24	199	54,03	45,17	45,02	38,59	1000	245	4	65	3600
GMJ 4/24	4	1562	1394	3050	1890	24-20	169	46,31	38,59	38,59	32,16	1000	245	4	65	3300
GMJ 4/20	4	1500	1244	2838	1690	20-16	139	38,59	30,87	32,16	25,73	1000	245	4	65	2800
GMJ 4/16	4	1500	1094	2688	1290	16-12	109	30,87	23,16	25,73	19,30	1000	245	3	65	2350

**GMJ SERİSİ**  
**740 x 740**

**GMJ SERIES**  
**740 x 740**