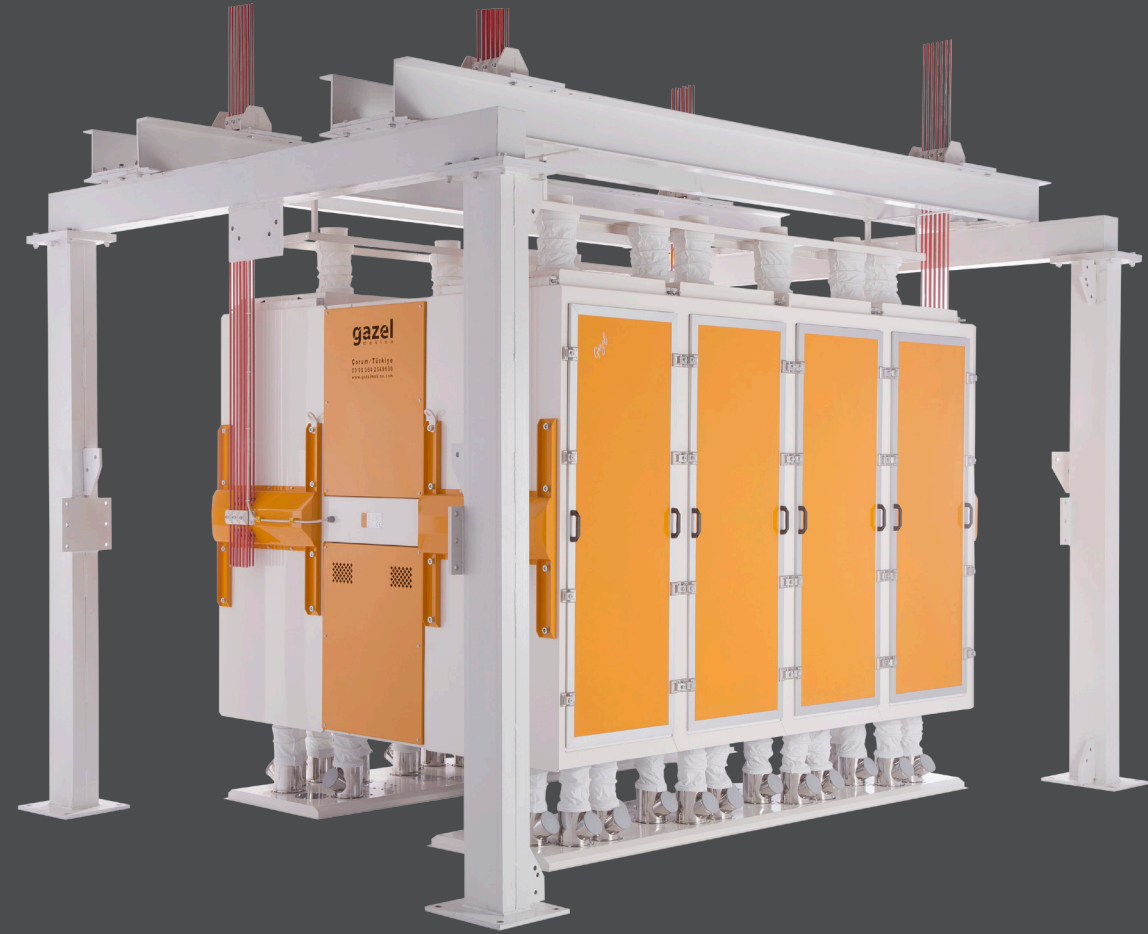


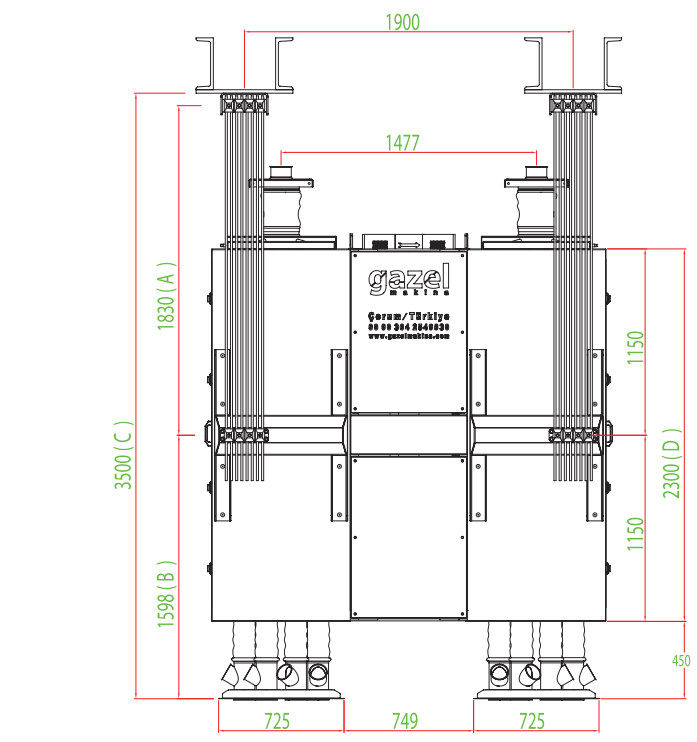
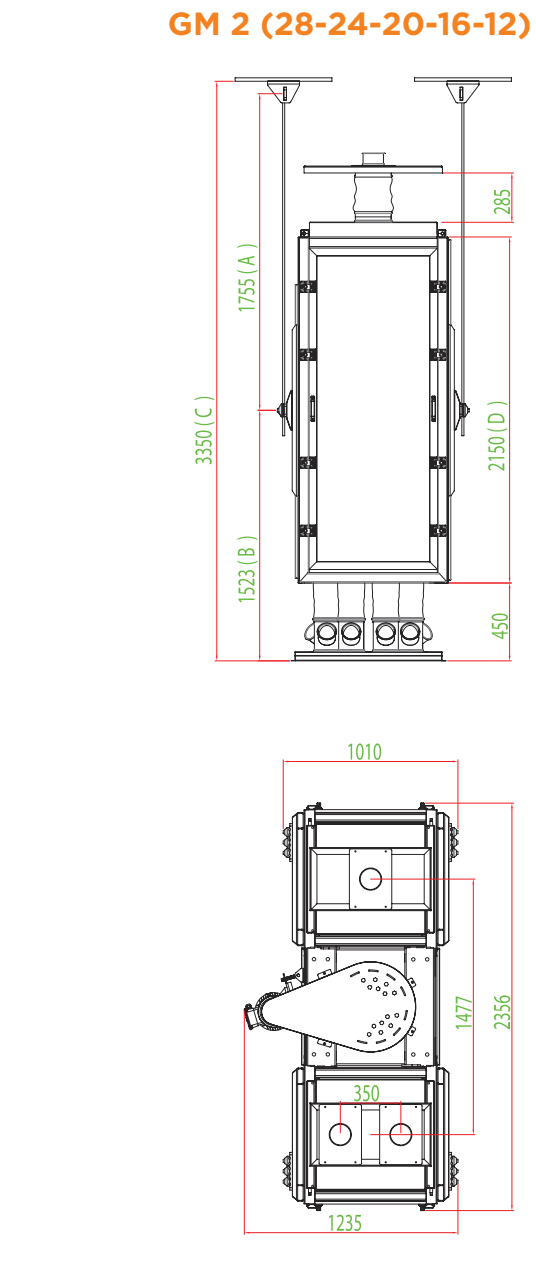
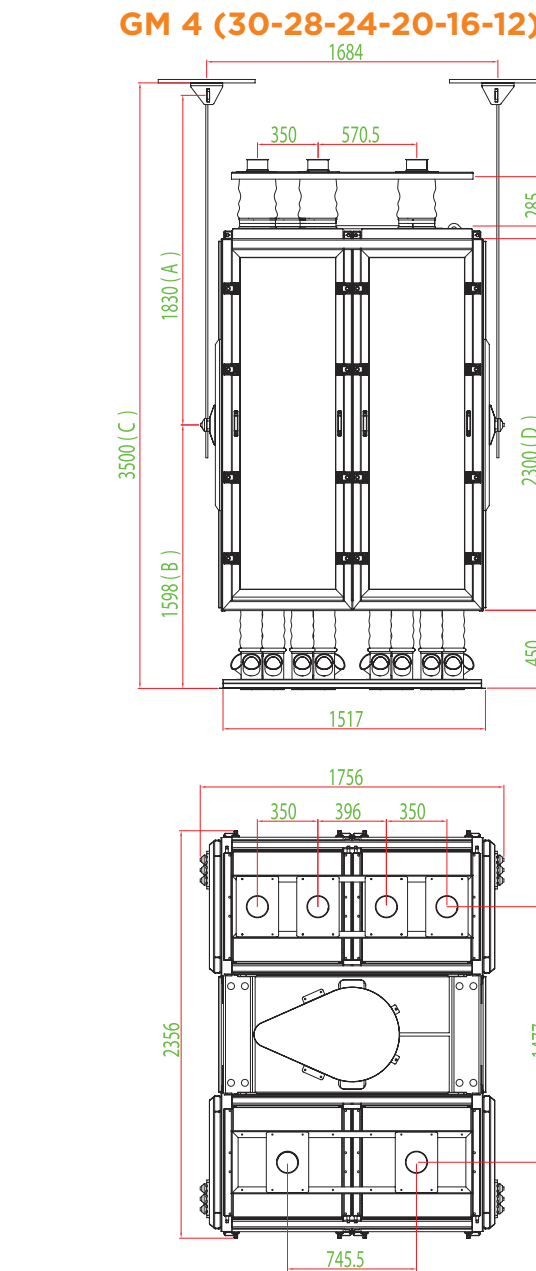
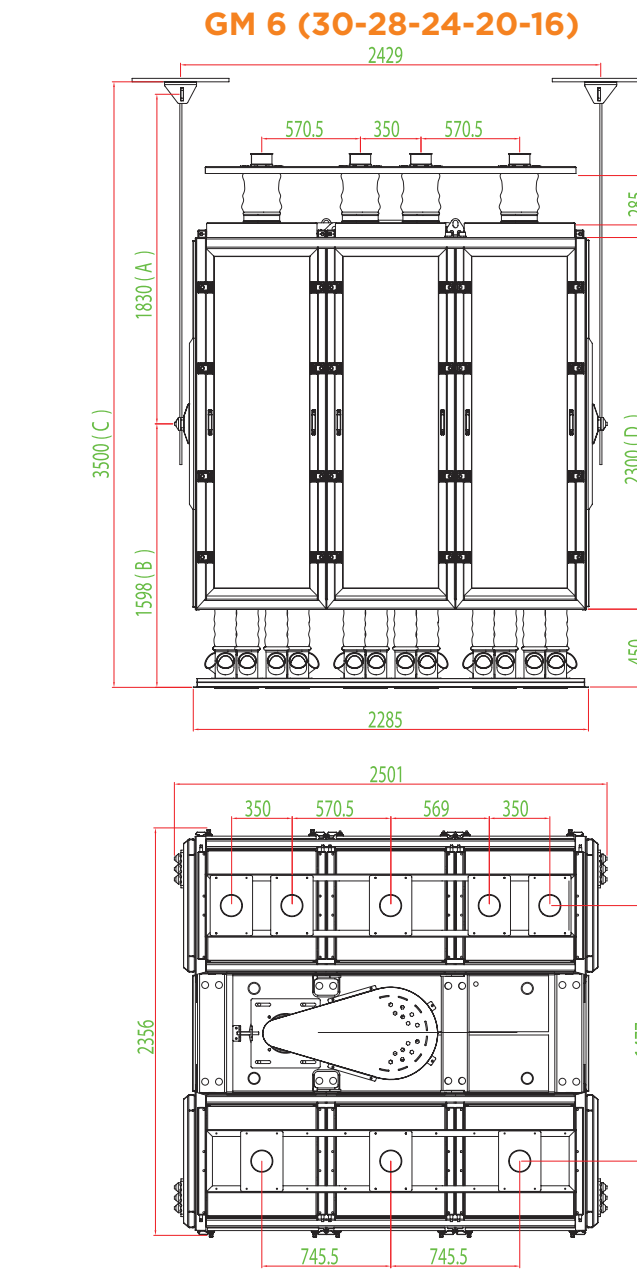
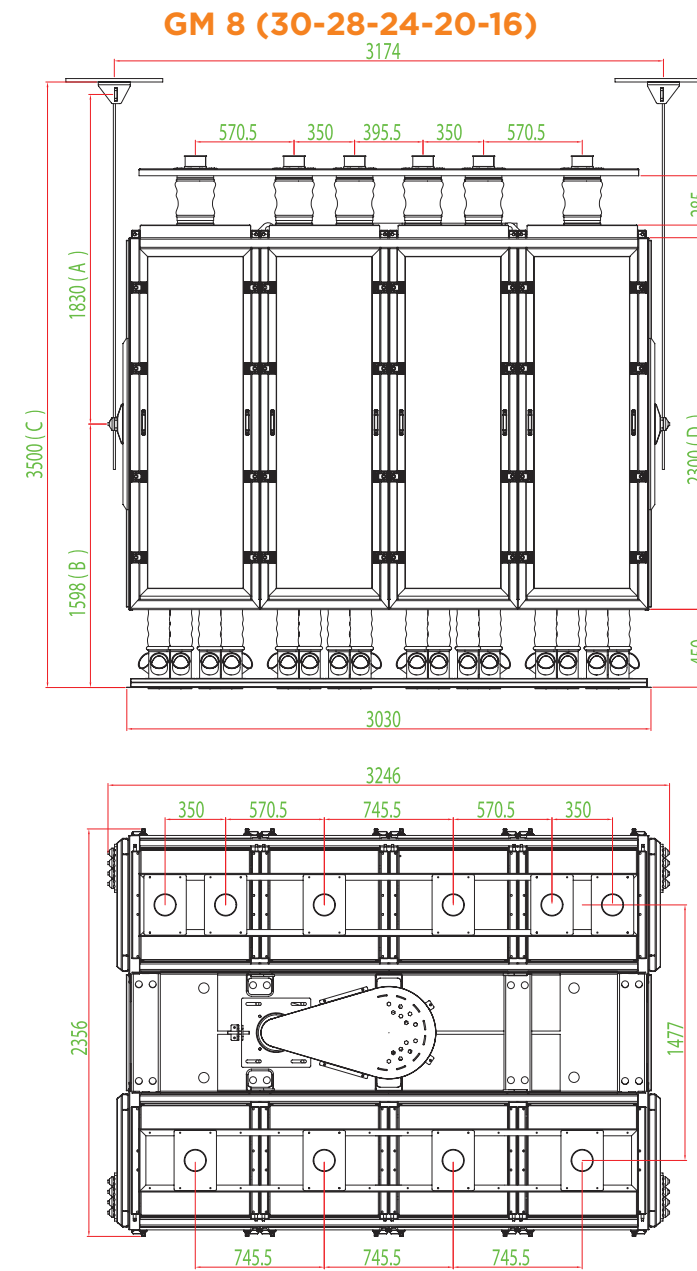
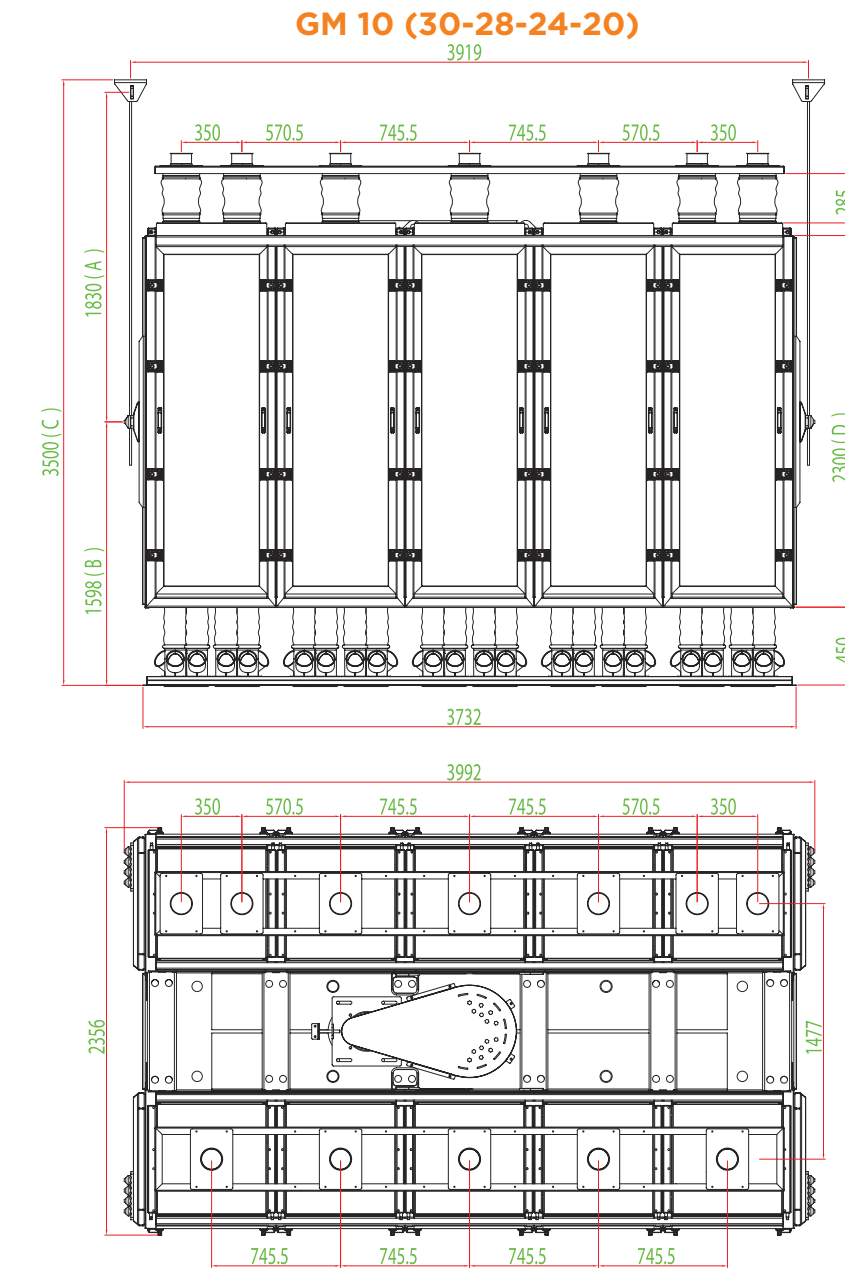
YÜKSEK KAPASİTELİ
740 x 740 KASALI ELEK

HIGH CAPACITY SIFTER
WITH 740 x 740 SIEVES

GMJ
Serisi
GMJ
Series



gazel
milling



GM SERİSİ
640x640

GM SERIES
640x640

Tip Type	Pasaaj Sayısı Number of Section	Ölçüler Measures (mm)				Her Pasaajdaki Elek Sayısı Number of Sieves per Section	Toplam Kasa Yüksekliği Total Height of Sieves	Yaklaşık Eleme Alanı (m ²) Approximate Sifting Area (m ²)				Motor Devri Engine Speed (rpm)	Makine Devri Machine Speed (rpm)	Motor kw Engine kw	Makine Çalışma Dairesi Çapı Machine Working Circle Diameter (mm)	Yaklaşık Ağırlık Approximate Weight (KG)
		A	B	C (min)	D			G TİP-W TYPE		N TİP-N TYPE						
								Max	Min	Max	Min					
GM 10/30	10	1830	1598	3500	2300	30-26	214	106,02	91,88	85,50	74,10	1000	245	7,5	65	5950
GM 10/28	10	1755	1523	3350	2150	28-24	199	98,95	84,82	79,80	68,40	1000	245	7,5	65	5750
GM 10/24	10	1605	1373	3050	1850	24-20	169	84,82	70,68	68,40	57,00	1000	245	7,5	65	5300
GM 10/20	10	1500	1223	2795	1550	20-16	139	70,68	56,54	57,00	45,60	1000	245	5,5	65	4850
GM 8/30	8	1830	1598	3500	2300	30-26	214	84,82	73,51	68,40	59,28	1000	245	7,5	65	4900
GM 8/28	8	1755	1523	3350	2150	28-24	199	79,16	67,85	63,84	54,72	1000	245	5,5	65	4700
GM 8/24	8	1605	1373	3050	1850	24-20	169	67,85	56,54	54,72	45,60	1000	245	5,5	65	4300
GM 8/20	8	1500	1223	2795	1550	20-16	139	56,54	45,24	45,60	36,48	1000	245	5,5	65	3900
GM 8/16	8	1500	1073	2645	1250	16-12	109	45,24	33,93	36,48	27,36	1000	245	4	65	3400
GM 6/30	6	1830	1598	3500	2300	30-26	214	63,61	55,13	51,30	44,46	1000	245	5,5	65	4050
GM 6/28	6	1755	1523	3350	2150	28-24	199	59,37	50,89	47,88	41,04	1000	245	4	65	3850
GM 6/24	6	1605	1373	3050	1850	24-20	169	50,89	42,41	41,04	34,20	1000	245	4	65	3450
GM 6/20	6	1500	1223	2795	1550	20-16	139	42,41	33,93	34,20	27,36	1000	245	4	65	3050
GM 6/16	6	1500	1073	2645	1250	16-12	109	33,93	25,44	27,36	20,52	1000	245	4	65	2650

Tip Type	Pasaaj Sayısı Number of Section	Ölçüler Measures (mm)				Her Pasaajdaki Elek Sayısı Number of Sieves per Section	Toplam Kasa Yüksekliği Total Height of Sieves	Yaklaşık Eleme Alanı (m ²) Approximate Sifting Area (m ²)				Motor Devri Engine Speed (rpm)	Makine Devri Machine Speed (rpm)	Motor kw Engine kw	Makine Çalışma Dairesi Çapı Machine Working Circle Diameter (mm)	Yaklaşık Ağırlık Approximate Weight (KG)
		A	B	C (min)	D			G TİP-W TYPE		N TİP-N TYPE						
								Max	Min	Max	Min					
GM 4/30	4	1830	1598	3500	2300	30-26	214	42,41	36,75	34,20	29,64	1000	245	4	65	3100
GM 4/28	4	1755	1523	3350	2150	28-24	199	39,58	33,93	31,92	27,36	1000	245	3	65	2950
GM 4/24	4	1605	1373	3050	1850	24-20	169	33,93	28,27	27,36	22,80	1000	245	3	65	2650
GM 4/20	4	1500	1223	2795	1550	20-16	139	28,27	22,62	22,80	18,24	1000	245	3	65	2360
GM 4/16	4	1500	1073	2645	1250	16-12	109	22,62	16,96	18,24	13,68	1000	245	3	65	2070
GM 4/12	4	1500	923	2495	950	12-8	79	16,96	11,31	13,68	9,12	1000	245	3	65	1750
GM 2/28	2	1755	1523	3350	2150	28-24	199	19,79	16,96	15,96	13,68	1000	245	2,2	65	2250
GM 2/24	2	1605	1373	3050	1850	24-20	169	16,96	14,14	13,68	11,40	1000	245	2,2	65	1950
GM 2/20	2	1500	1223	2795	1550	20-16	139	14,14	11,31	11,40	9,12	1000	245	2,2	65	1650
GM 2/16	2	1500	1073	2645	1250	16-12	109	11,31	8,48	9,12	6,84	1000	245	2,2	65	1350
GM 2/12	2	1500	923	2495	950	12-8	79	8,48	5,65	6,84	4,56	1000	245	2,2	65	1090